

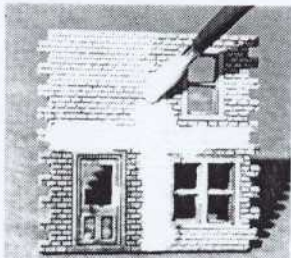
# JOINT AND FLAW DISGUISE

ONE OF THE MOST IMPORTANT SECRETS OF BUILDING REALLY SUCCESSFUL MODELS WITH LINKA SYSTEM IS TO FIND AN EFFECTIVE WAY OF MAKING SURE THAT THE JOINTS ARE INVISIBLE AND THAT ANY OTHER FLAWS THAT MAY HAVE CREPT INTO THE CONSTRUCTION ARE DISGUISED.

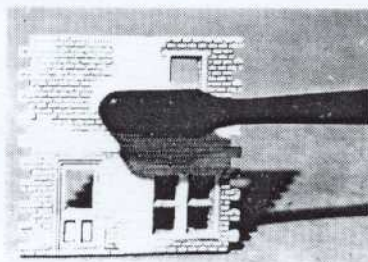
Many joints will be perfect and the painting will hide any hair-line gaps, but sometimes a misalignment of a joint or an air-bubble in the casting will detract.

When you have finished the model, examine it for flaws. Most minor faults can be disguised as follows:-

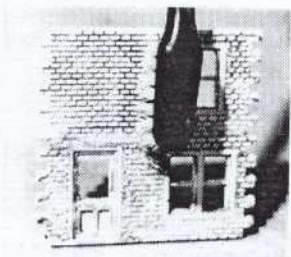
1. PREPARE A WEAK LINKALITE MIX (4 or 5 teaspoonsful of water to a half teaspoonful of compound will be fine).



2. PAINT THE LINKALITE OVER THE FAULTS.



3. With an old toothbrush, GENTLY BRUSH OUT THE EXCESS LINKALITE FROM THE HORIZONTAL MORTAR LINES.

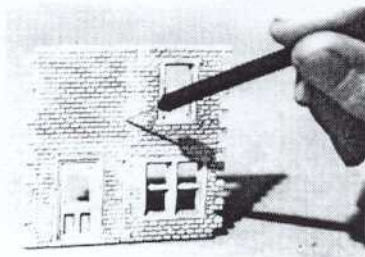


4. BRUSH EXCESS FROM VERTICAL MORTAR LINES (even more gently - brush too hard and you dislodge the joint disguise).



5. WIPE SURFACE WITH A DAMP CLOTH.

6. ETCH OUT ANY MORTAR LINES STILL COVERED.

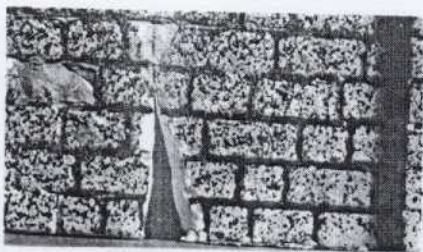


THIS METHOD CAN BE USED EITHER BEFORE OR AFTER PAINTING, BUT WE RECOMMEND IT BE DONE AFTER THE FIRST COAT OF PAINT - the weak Linkalite shows up better on the painted surface and it saves 'repairing' flaws that the paint would have disguised anyway.

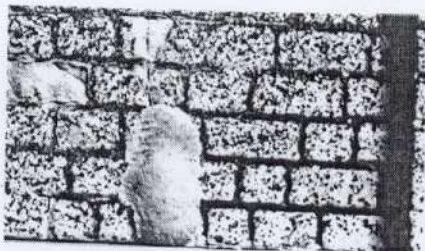
# JOINT AND FLAW DISGUISE

AN ALTERNATIVE METHOD, PARTICULARLY USEFUL FOR LARGER CRACKS AND FLAWS, IS TO USE 'DAS' (OR SIMILAR) SELF-HARDENING CLAY.

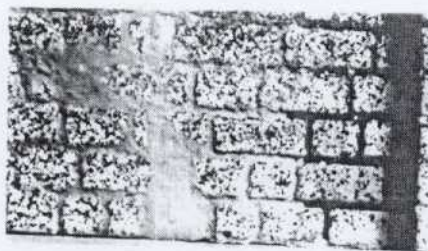
A word about 'Das' first - it is a Plasticine-like material that comes in an airtight foil pack. Though soft to work with, straight from the pack, contact with air makes it harden overnight to become as strong as the Linka System castings. It is useful to have a small bowl of water handy, to keep the surface pliable while working with the clay, though final sanding and etching can take place after it has hardened and set, if desired.



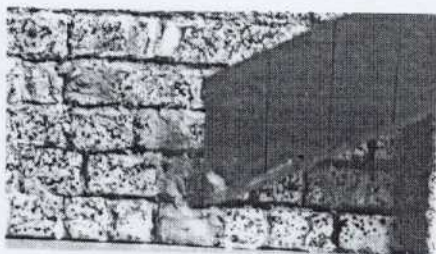
A TYPICAL FRACTURE FROM A DAMAGED MODEL.



1. FILL WITH CLAY.

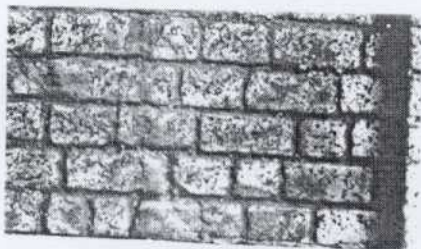


2. SMOOTH OVER  
(brush with water if need be).



3. WITH A NEEDLE OR CRAFT  
KNIFE, ETCH IN MORTAR  
LINES OVER FAULTED AREA.

4. FINAL SANDING AND ETCHING CAN  
TAKE PLACE AFTER THE CLAY HAS  
SET. PAINT THE AREA TO MERGE  
WITH THE REST OF THE MODEL.



COMPLETED REPAIR.

'Das' Clay can also be used for adding special features such as plaques and cornices etc. Model the clay as you would Plasticine and etch in any details before it sets. It sometimes helps to wet the Linka surface to increase the adhesion of the clay to the Linka. Alternatively, the clay can be glued to the Linka.